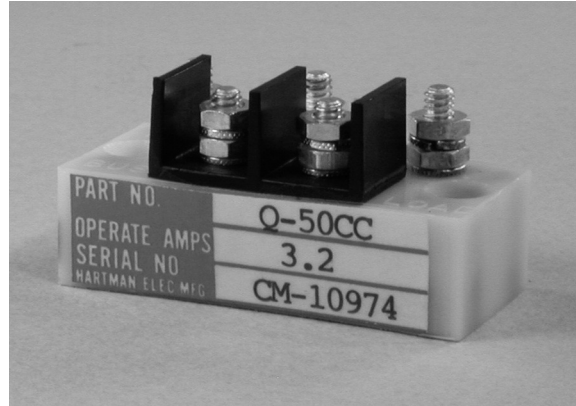


Q-50 Series Relay, Current Indicator, Rated up to 15 Amps, 28 Vdc

Product Facts

- SPDT
- Environmentally sealed
- Meets many requirements of MIL-PRF-6106



Performance Data

Electrical Characteristics

Contact Arrangement — SPDT

Contact Rating @ 28 Vdc —
0.25 Amp

Lamp Load @ 28 Vdc —
0.10 Amp

Rated Operating Voltage — 28 Vdc

Sensing Current Rating — 15 Amps
DC, continuous, max.

Pickup Max. —
3.2 Amps DC

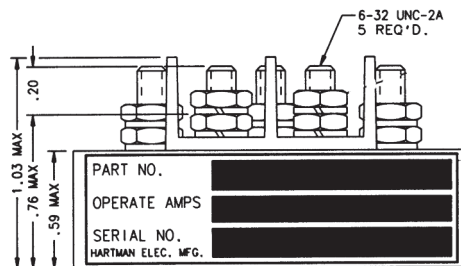
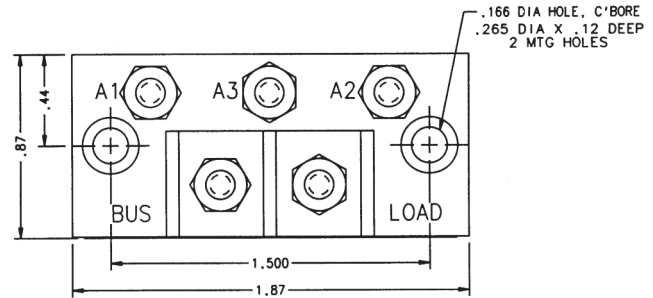
Dropout Min. — 1.2 Amps

General Characteristics

Temperature Range —
-55°C to +85°C

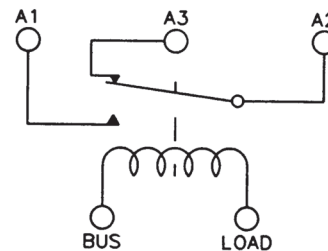
Altitude, Max. — 50,000 ft

Weight, Max. — 1.25 oz



Mounting Style A

Circuit Configurations (Consult factory for other available circuit configurations)



Circuit Configuration 1

For factory-direct application assistance, phone 419-521-9500 or fax 419-526-2749.

HARTMAN Part Number	Construction Type	Mounting Style	Duty Cycle	Circuit Config.	TE Part Number
Q-50CC	Environmentally Sealed	A	Continuous	1	1616131-7